

One-Wall Workshop

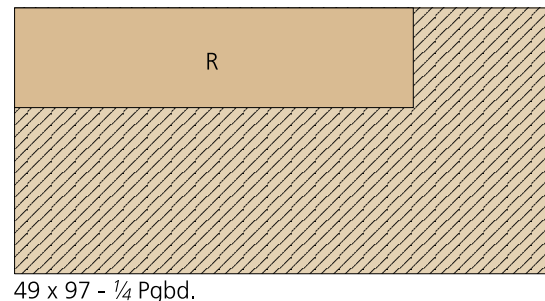
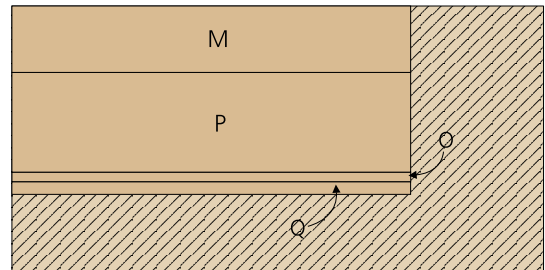
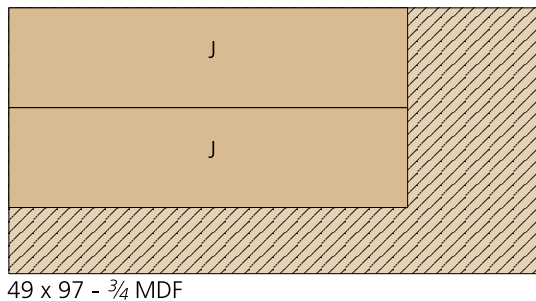
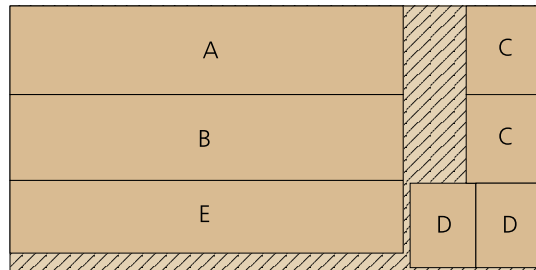
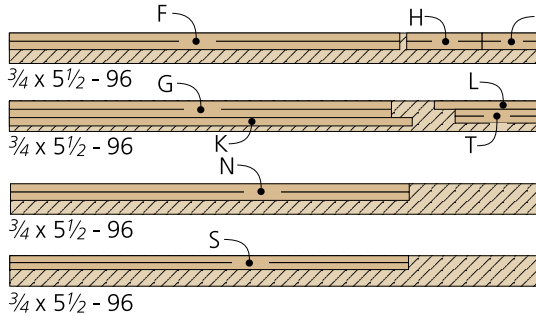
Materials

STORAGE CABINET WORK AREA

A	Top	16 x 71 - 3/4 MDF
B	Bottom	15 1/2 x 71 - 3/4 MDF
C	Left/Right End (2)	13 5/8 x 16 - 3/4 MDF
D	Dividers (2)	11 7/8 x 15 1/4 - 3/4 MDF
E	Back	13 1/8 x 71 - 3/4 MDF
F	Bottom Fillers (2)	3/4 x 1 1/2 - 70 1/2
G	Face Frame Rails (2)	3/4 x 1 1/2 - 69
H	Face Frame Outer Stiles (2)	3/4 x 1 1/2 - 13 5/8
I	Face Frame Center Stiles (2)	3/4 x 1 1/2 - 10 5/8
J	Tops (2)	18 1/2 x 72 - 3/4 MDF
K	Front Edging	3/4 x 1 1/2 - 72 3/4
L	End Edging	3/4 x 1 1/2 - 19 1/4
M	Bottom Panel	12 x 72 - 3/4 MDF

N	Panel Blocking (2)	1 x 1 1/2 - 72
O	Panel Edging	1 3/4 x 72 - 3/4 MDF
P	Top Panel	18 x 72 - 3/4 MDF
Q	Front Light Rail	2 1/4 x 72 - 3/4 MDF
R	Pegboard	18 x 72 - 1/4 Pgbd.
S	Horizontal Spacer (2)	3/4 x 1 1/4 - 72
T	Vertical Spacers (2)	3/4 x 1 1/4 - 15 1/2

STORAGE CABINET WORK AREA



One-Wall Workshop

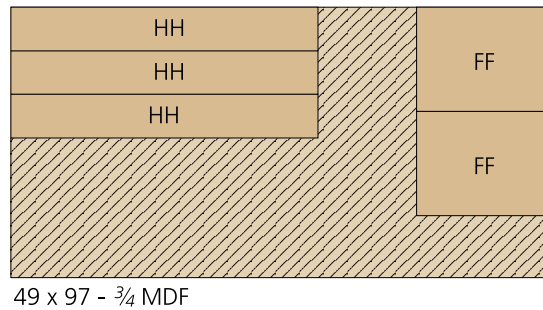
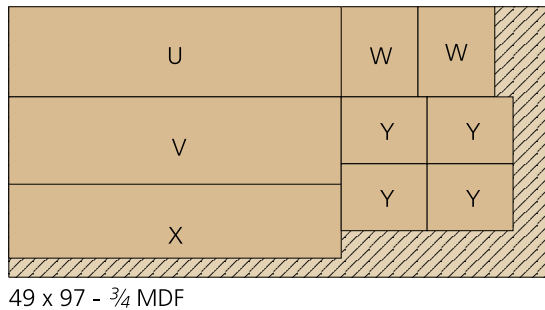
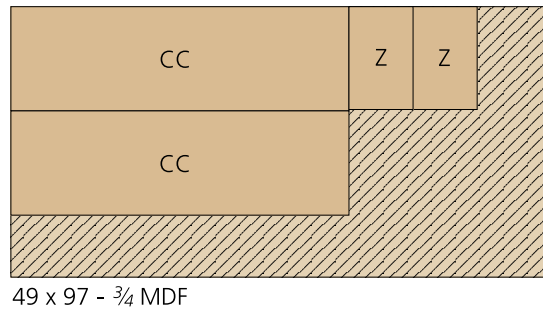
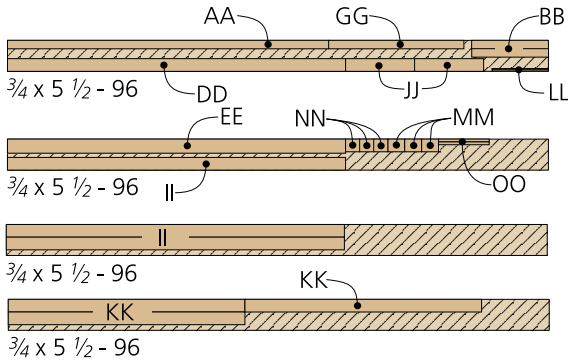
Materials

WORKBENCH AREA

U	Top	16 x 59 - 3/4 MDF
V	Bottom	15 1/2 x 59 - 3/4 MDF
W	Left/Right End (2)	13 5/8 x 16 - 3/4 MDF
X	Back	13 1/8 x 59 - 3/4 MDF
Y	Partitions (4)	11 7/8 x 15 1/4 - 3/4 MDF
Z	Top Supports (2)	11 3/8 x 18 1/4 - 3/4 MDF
AA	Face Frame Rail	3/4 x 1 1/2 - 57
BB	Face Frames Stiles (2)	3/4 x 1 1/2 - 13 5/8
CC	Tops (2)	18 1/2 x 60 - 3/4 MDF
DD	Front Edging	3/4 x 2 1/4 - 60
EE	Filler Strip	3/4 x 2 1/2 - 60
FF	Tops (2)	18 1/2 x 24 - 3/4 MDF
GG	Front Edging	3/4 x 1 1/2 - 24
HH	Top (3)	7 3/4 x 54 1/2 - 3/4 MDF
II	Rails (3)	3/4 x 2 1/4 - 54 1/2

JJ	Left/Right End (2)	3/4 x 2 1/4 - 12 1/4
KK	Vise Dog Run (3)	3/4 x 2 1/4 - 42
LL	Vise Guide Strips (2)	3/4 x 1/4 - 10
MM	Vise Traveler Block (3)	3/4 x 2 1/4 - 3
NN	Vise Mounting Block (3)	3/4 x 2 1/4 - 2 1/2
OO	Support Wedges (2)	3/4 x 1/2 - 9

WORKBENCH AREA



One-Wall Workshop

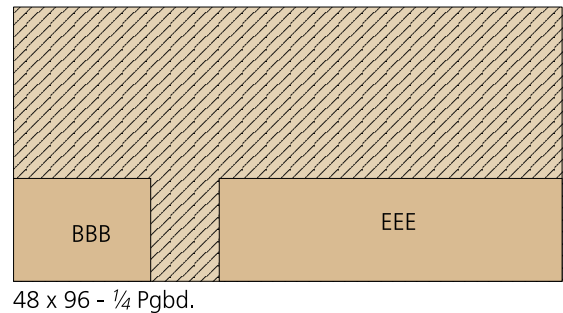
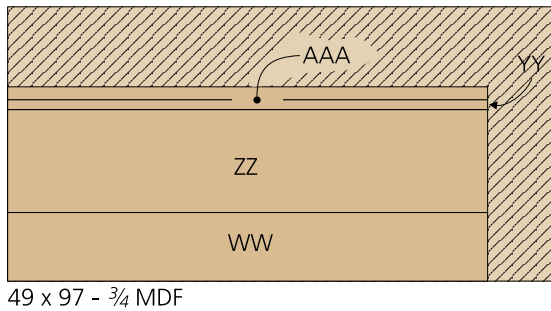
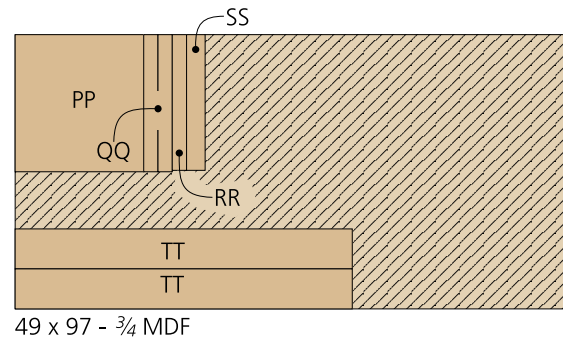
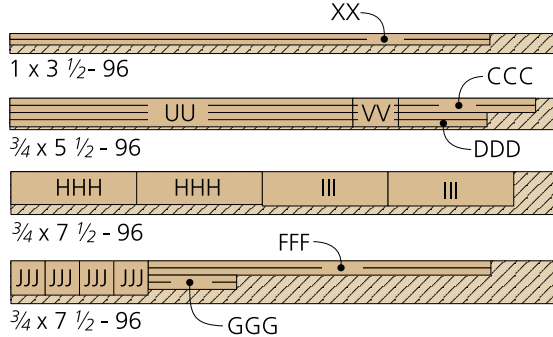
Materials

ADDITIONAL STORAGE

PP	Top	22½ x 24 - ¾ MDF
QQ	Sides (2)	2½ x 24 - ¾ MDF
RR	Front Face	2½ x 23¾ - ¾ MDF
SS	Flange (2)	3¼ x 24 - ¾ MDF
TT	Shelves (2)	7 x 59 - ¾ MDF
UU	Front/Back Edging (4)	¾ x 1¼ - 60
VV	End Edging (4)	¾ x 1¼ - 8
WW	Bottom Panel	12 x 84 - ¾ MDF
XX	Panel Blocking (2)	1 x 1½ - 84
YY	Panel Edging	1¾ x 84 - ¾ MDF
ZZ	Top Panel	18 x 84 - ¾ MDF
AAA	Front Light Rail	2¼ x 84 - ¾ MDF
BBB	Pegboard	18 x 24 - ¼ Pgbd.
CCC	Top/Bottom Spacer (2)	¾ x 1¼ - 24
DDD	End Spacers (2)	¾ x 1¼ - 15½
EEE	Pegboard	18 x 60 - ¼ Pgbd.

FFF	Top/Bottom Spacer (2)	¾ x 1¼ - 60
GGG	End Spacers (2)	¾ x 1¼ - 15½
HHH	Shelves (2)	¾ x 5¾ - 22
III	Back Panels (2)	¾ x 6 - 22
JJJ	Ends (4)	¾ x 6 - 6

ADDITIONAL STORAGE



NOTE: IF BUILDING THE ENTIRE ONE-WALL WORKSHOP, SHEET GOOD PARTS CAN BE COMBINED TO MINIMIZE SHEET REQUIREMENTS